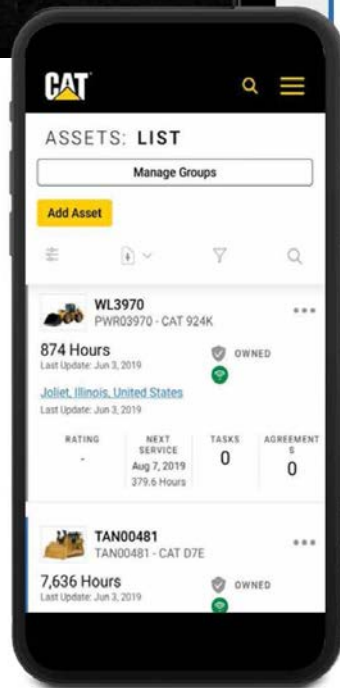
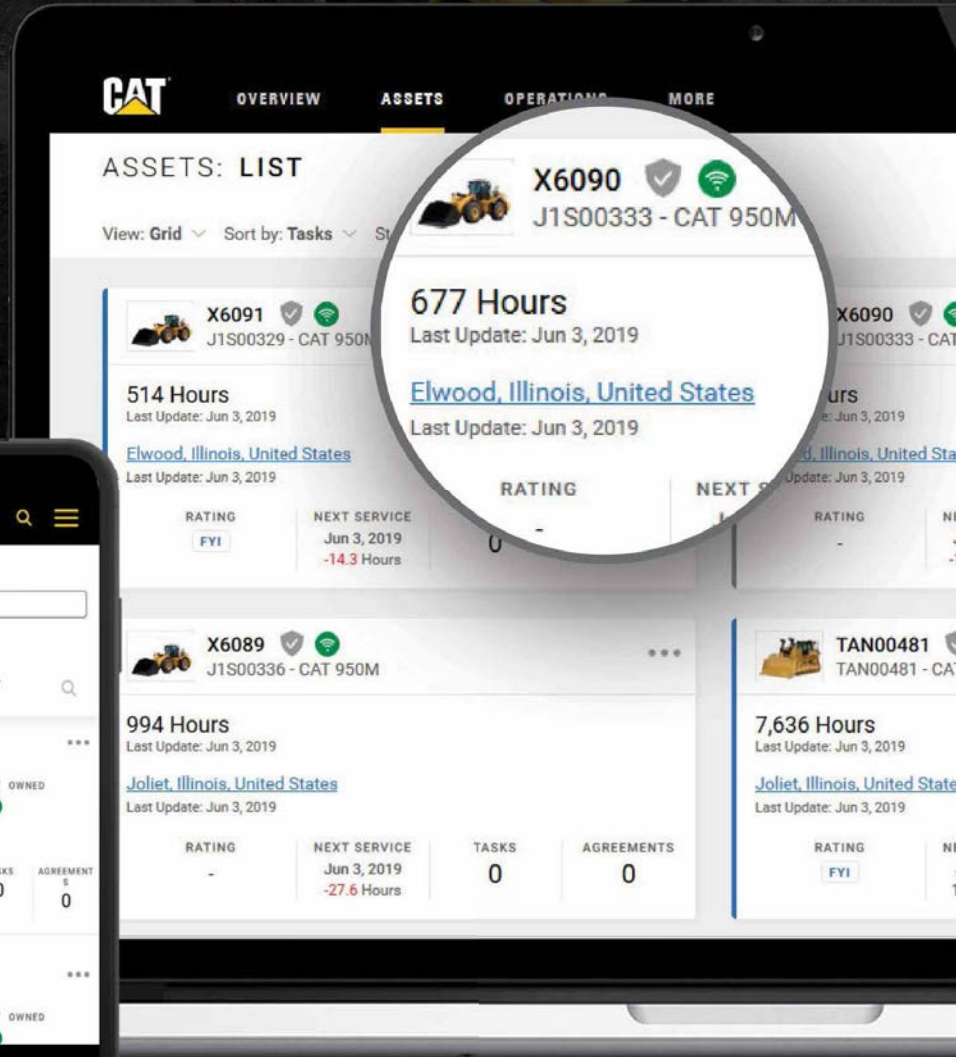


# MY.CAT.COM

## DIGITAL FLEET MANAGEMENT SOLUTIONS CONNECT 24/7

Now you can connect with Quinn Company and with your equipment on your schedule, 24/7, with My.Cat.Com. Using a computer or tablet, you can access asset data from all your connected equipment—including location, health, maintenance, performance and more—to manage your fleet, improve utilization and productivity, and control costs.



### WHAT CAN CUSTOMERS DO WITH MY.CAT.COM?

- » Connect with Quinn Company
- » Purchase parts or request service
- » Track hours, location, fuel use, health & utilization
- » Track idle time vs. operating time
- » Receive health & maintenance alerts
- » Manage planned maintenance
- » Access operation & maintenance manuals
- » View warranties, work orders, service history & safety service letters
- » Access data history from the past two years
- » Create & share tasks

Visit today. [My.Cat.com](http://My.Cat.com)  
Questions? Email [cm@quinncompany.com](mailto:cm@quinncompany.com)



**LET'S GET TO WORK.®**

# HOW TO REGISTER FOR MY.CAT.COM

» Navigate to My.Cat.com and click Sign Up

## » STEP 1

- Enter First Name
- Enter Last Name
- Create a username
- Choose a password
- Enter Email
- Enter Phone Number
- Enter Country
- Enter Company

## » STEP 2

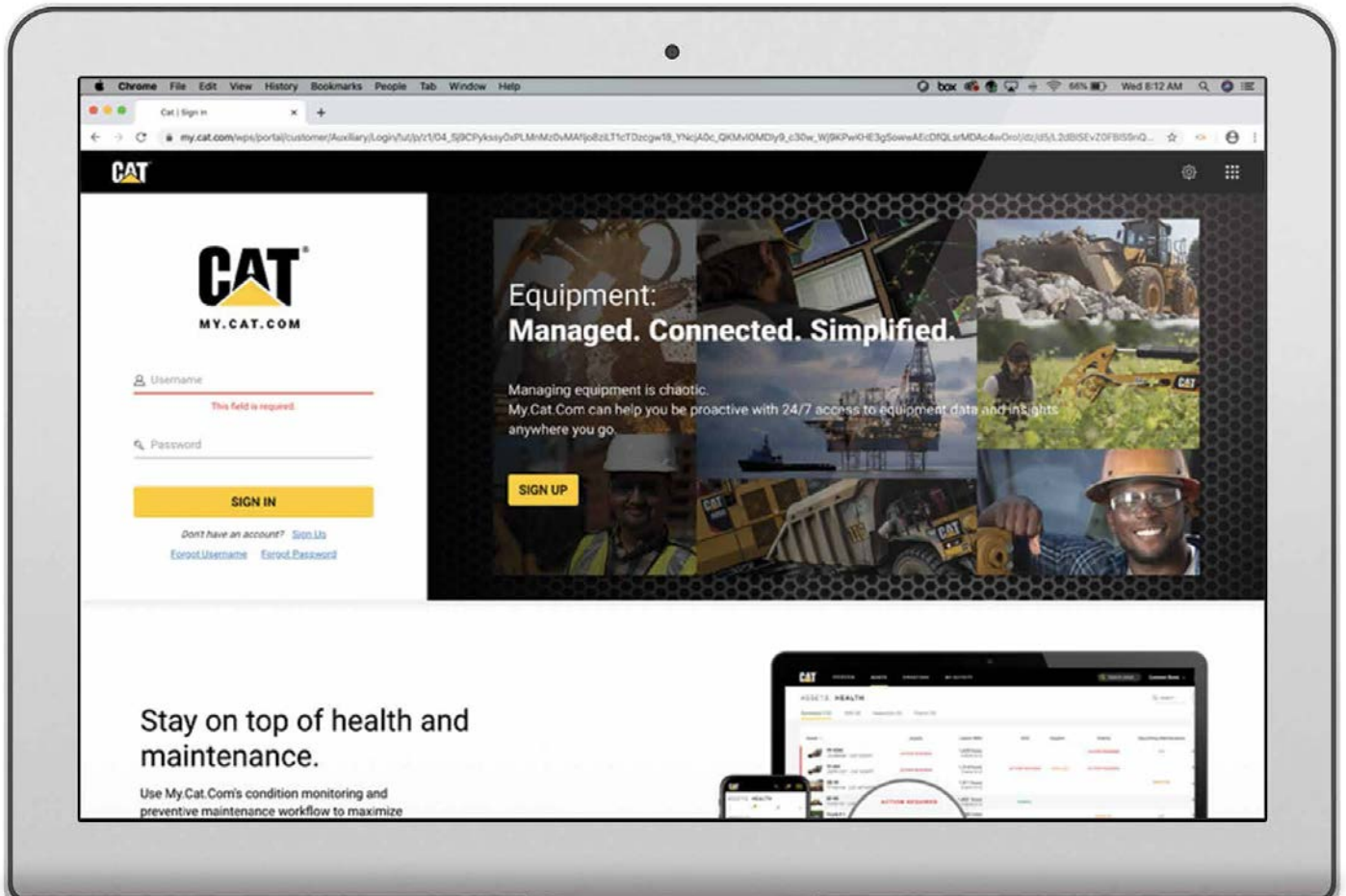
- Enter Zip Code
- Select Your Carter Machinery Location

## » STEP 3

- Enter Billing Address
- Enter Customer Number (if known)

## » STEP 4

- Agree to terms and conditions



Visit today. My.Cat.com  
Questions? Email [cm@quinncompany.com](mailto:cm@quinncompany.com)

**QUINN** 

**LET'S GET  
TO WORK.®**